



PO Box 10331, Christchurch 8145. Ph 03 341 3141

info@cmsnz.org.nz cmsnz.org.nz facebook.com/classicmotoring



JULY 2014

EVENTS DIARY

SUNDAY 6TH JULY:

Usual Meeting Princess Margaret Hospital Car Park No3 at 10.30am. Just a short run this month and then we will go to Filedelfios for lunch and the AGM at 2pm. Please come along to support your club.

THURSDAY 17th GOLD CARD CRUISERS

Jim Milne will be our host. Meet at the West Melton Tavern Car Park at 10.30am. We will lunch at a cafe.

FRIDAY JULY 25TH:

West Coast weekend - details further down newsletter. Mel Peters 03 337 4144 or petersmg@ihug.co.nz

SUNDAY AUGUST 3rd:

We will meet at Princess Margaret Hospital Car Park 3 at 10.30am. More details next newsletter.

THURSDAY AUGUST 14th:

Gold Card Cruisers Details in next newsletter.

2015 SEPTEMBER / OCTOBER NEW SOUTH WALES ODYSSEY:

Graeme Sharp is organising another Australian Odyssey. One highlight will be going to **BATHURST!**

CMSNZ WHO'S WHO

Chairman:	Julian Barrett 03 359 1100 jkbarrett@clear.net.nz
Vice- Chairman:	Graeme Sharp 021 395 944
Treasurer:	Diane Brandish 03 327 8991
Secretary:	Stephanie Royds 021 341 315
Committee:	Graeme Matheson 021 262 2300 Mel Peters 03 337 4144 Ian Langham ian.langham@vodafone.co.nz Jim Milne 03 366 3060
Newsletter:	Gill Peters 03 337 4144 petersmg@ihug.co.nz

AGM

The Annual General Meeting of our Club will be held
at
Filedelfios Gourmet Pizza Restaurant & Bar
150 Colombo Street
Christchurch

At 2pm Sunday 6th July 2014

The usual Sunday run will begin at 10.30am and go for lunch at Filedelfios at 1pm. Please come and show your support for your club.

JULIAN'S JOTTINGS

Julian is busy and out of town for his work.

Come along to the AGM to hear his report on the health of your club

ANNUAL ACCOUNTS

A copy of the Club's Annual Accounts were attached to your June Newsletter. If you do not have these please advise Gill Peters petersmg@ihug.co.nz

WEST COAST WEEKEND: Friday 25th July – Sunday 27th July

Venue Westport Motor Hotel 207 Palmerston Street
Westport Ph 03 789 7889.

The Hotel has given us a rate of \$110 per unit for 2 people.

We will meet for Lunch at Pukeko Junction Leithfield
At 11.30am and hopefully leave at about 12.30pm.

We will travel to Westport on Friday via the Lewis Pass.

On Saturday we will go to Karamea for lunch and then proceed North to the start of the Heaphy Track.

We will have a meal on Saturday night at the Westport Motor Hotel – It will be a buffet meal at a cost of \$34.50 per head.

Sunday we will travel down the Coast Road – lunch at Kumara – at the Theatre Royal Hotel and finish with Coffee & Cake at the Darfield Bakery.

Book your accommodation and please advise Mel Peters 03 337 4144 or email petersmg@ihug.co.nz of your participation.

Nelson Club members are most welcome to join us.

REPORT ON JUNE 1ST OUTING:



Scargill Domain – Note the new car model soon to be available in Christchurch.

It was Queen's Birthday weekend and the date for the Christchurch Marathon. Mel decided on a route away from the Marathon route but Peter & Irene ran out of petrol at the Russley & Harewood Road round-a-bout so a detour was made to help them. The Jacobs took the running sheets off to the Ashley River Bridge and Mel & I arrived just after the last of the 20 or so cars had left. Sadly Peter & Irene's went home on a truck – probably a first for our outings.

On our way back down the Scargill Valley we called in to see some friends who said that 3 different car groups had been up the road that day!

Lunch was at the Scargill Domain – new members – out of town members- and the old faithful's a great day out. As it was cold we soon were off to the Soda Cafe in Rangiora and it was closing time before we left. Another great day's motoring
Gill Peters Photos by Kieran McGovern



A cross section of the cars at Scargill

“GOLD CARD CRUISERS”

Thursday 12th JUNE

A very cold and rainy day did not stop 8 cars attending this outing. As it was mid-winter we decided to give ourselves a treat and we went to Akaroa and had lunch at Bully Hayes. It was too cold to explore Akaroa (but there were 2 kyacks out on the bay) so we drove back to Lincoln for that all important coffee & cake. A great mid-winter outing with friends.



An enjoyable lunch is anticipated!

dollar. The Bathurst cost will be an extra as will your rental car and air travel.

Rental cars: are being arranged by Max Clarke who negotiated an incredible deal for the SA tour and he expects a similar outcome. We will keep you informed.

Restricted Entry: the tour will be limited to 20 cars at this stage as some of the centres we intend to visit have limited accommodation. We will review this after the plotting run.

Deposit: once again we will be calling for a non-refundable deposit of \$500 per entrant to cover accommodation deposits which are common in Australia for group bookings. Receipt of your deposit will confirm your entry and we will be asking for these in September/ October this year.

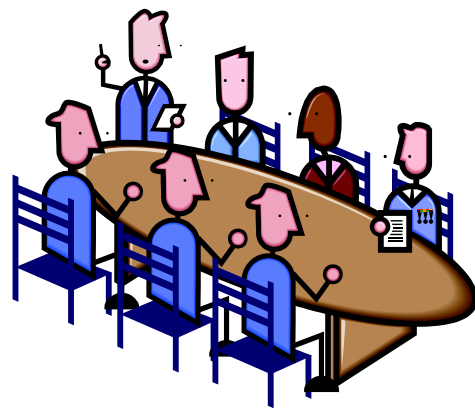
Latest info: We are proceeding with our planning for the 2015 NSW Odyssey the tour has been extended by one day so that we can get to spend 2 days at Bathurst or exploring the region around Orange. We are negotiating an **optional** two day at Bathurst with an experienced Tour Provider recommended by one of our members and expect to have details later in the year. They provide transport to and from the meeting each day, grandstand tickets and pit passes. Robin & Barbara Fletcher are again plotting our tour and will provide a full route book complete with tourist information and no doubt a daily activity to keep our minds alert. Those who have done the Victoria & SA Odysseys will be familiar with the quality of the route books. Contact Graeme Sharp sharpish@clear.net.nz

2015 New South Wales Odyssey.

Planning: is well ahead and we have a route schedule mapped out for the 14day grand tour of New South Wales in 2015. The tour will again be plotted by Robin and Barbara Fletcher and we know from experience what a fantastic job they do for us in seeking out points of interest for us to enjoy along the way.

Dates: are still to be decided as the Bathurst race date has not been set yet. Apparently the AFL ((Aussie Rules Football)) is changing the date for their final because of the cricket world cup dates. Aussie TV will not broadcast both the AFL and Bathurst on the same day. Dates are expected to be finalised by late September this year.

Costs: are likely to be in the vicinity of \$2750 per car for the 14day tour. This includes all motel /hotel costs, route plotting and route book, commemorative rally plates, and 3 tour dinners. We are subsidising the plotting costs by utilising the surplus accrued on the South Australian Odyssey. We have calculated the exchange rate at NZ .88 cents against the Australian



Come along to your AGM and share ideas.